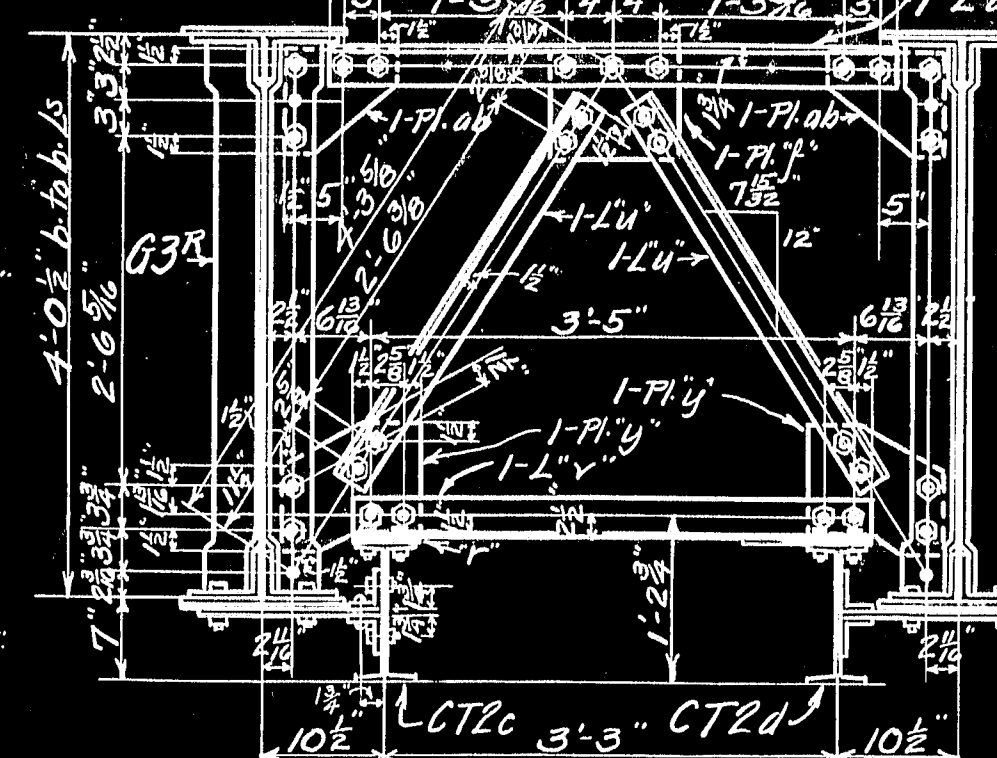
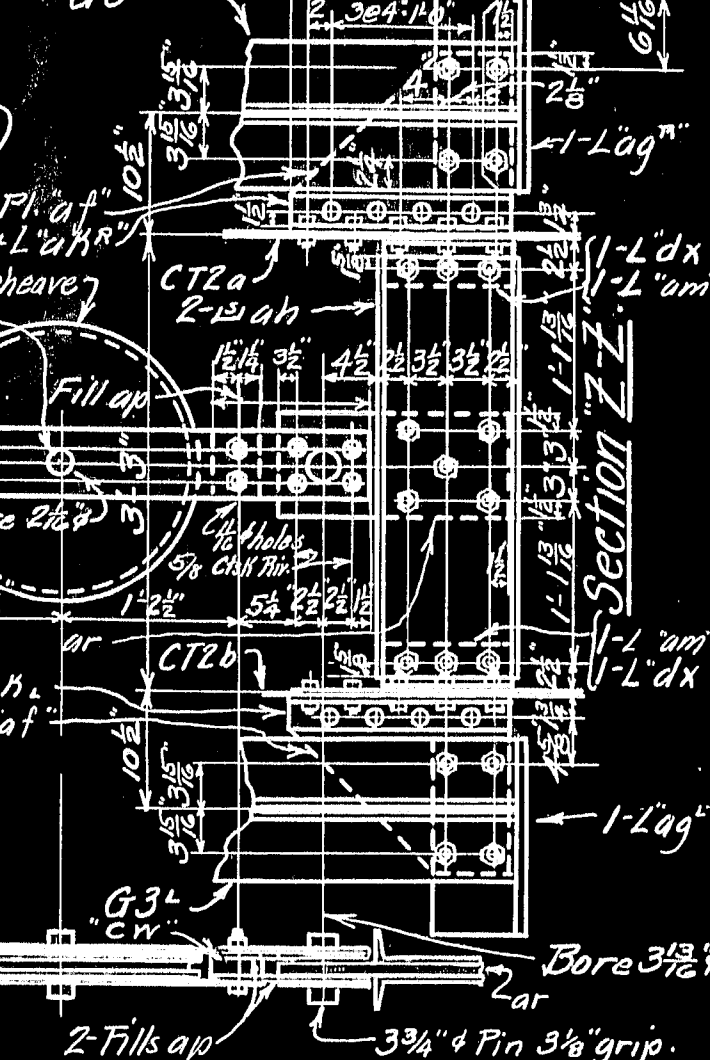


General Notes: Holes for turned bolts to be drilled to template. Rivet beams, plates and angles one coat of black. New holes in flanges of beams C11 and C12 are to be 1/2" except as noted. All other holes 5/8" & Edge distances to sheared edges not given are 1 1/2".

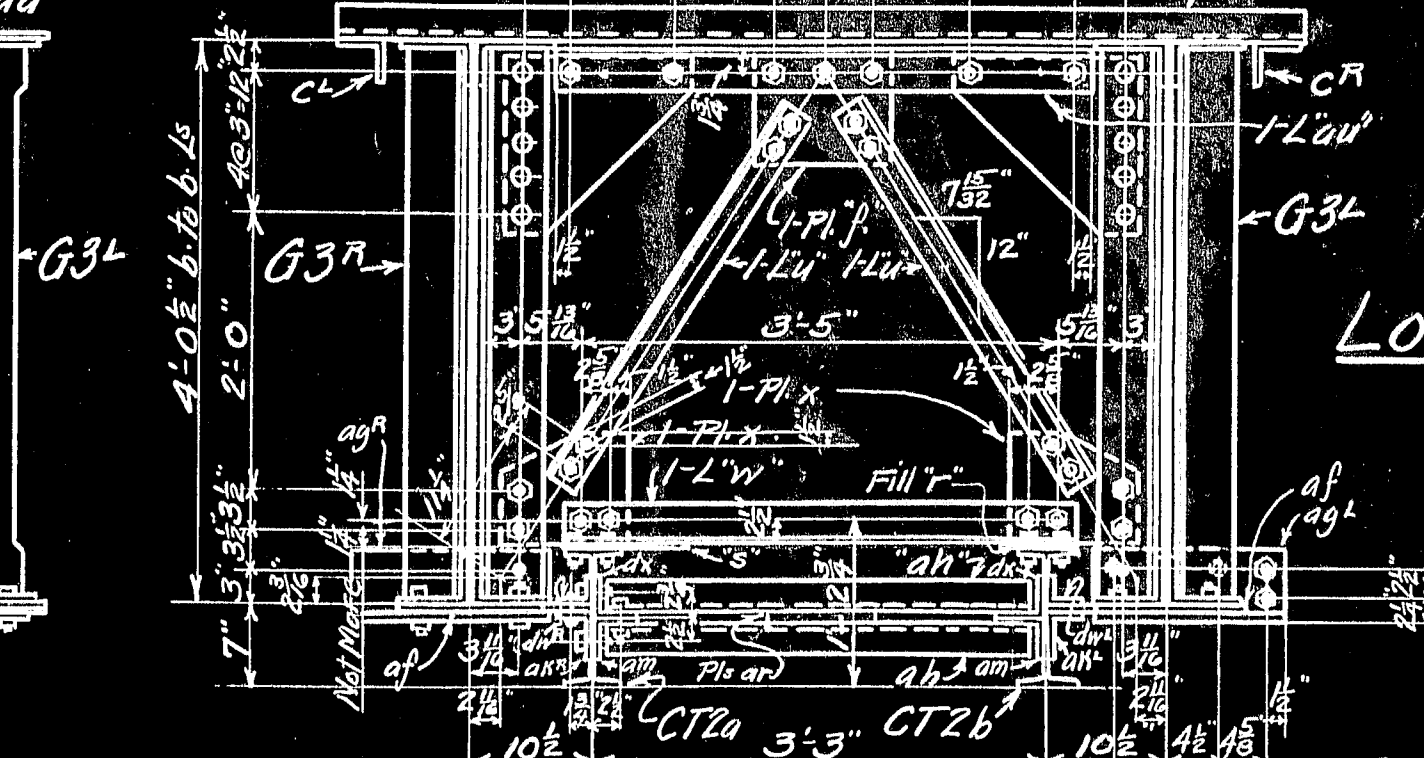
Note: Fasten sheaves to T.T.I. in such a manner that pls. in will not be bent in handling.

Detail for 3/4" pin.
Scale 3" = 1'-0"

Detail for 1 1/2" x 2 1/2" pins.
Scale 3" = 1'-0"



Section Y-Y:
Section A-A is app. hand to Section Y-Y.
Section C-C same as Section Y-Y except that 1" x 1" is reversed and on far side of pls. Y and C11 to replace C12 and.



Section X-X:
Examined + Approved.

Lower Portion of Traveler for Erecting Towers
F.W.A. Project No. Me. 1010D
Deer Isle Sedgwick Bridge District
Bridge over Eggemoggin Beach
from Little Deer Isle to Sedgwick
Hancock County, Maine
Robinson & Steinman Engineers, New York City
The Phoenix Bridge Co.
Erection Dept.
Engr. R. S. Foulds.
Draftsman: Frank W. Peirce.
Scale: 1" = 1'-0"
Date: 9/10/38.
Supt. of Erection. **C.O. 457** **Drg. T3A.**

